

UNIK[®]
MACHINE
右立砖机



**CONCRETE BLOCKS, PAVERS,
KERBSTONES MAKING MACHINE**
多功能混凝土砌块成型机



Nearby airport:

Jinjiang airport, Quanzhou city (20 mins from factory)
Xiamen airport, Xiamen city (1 hour from factory)

Transportation:

Fly from Guangzhou: 1 hours
Fly from Shenzhen: 1 hours
Fly from Shanghai: 1.5 hours
Fly from Beijing: 2.5 hours
Bullet train from Shenzhen: 4 hours
Bullet train from Shanghai: 7 hours

福建省右立机械科技有限公司
Fujian Unik Machinery Technology Co., Ltd

ADD: Wuli Industry Zone, Jinjiang, Quanzhou City, Fujian Province, China
Tel: (86)595-28085862 15906071097 Fax: (86)595-28085861
Email: sales@unikmachinery.com
Website: www.unikblockmachines.com www.unikmachinery.com
Post Code: 362200

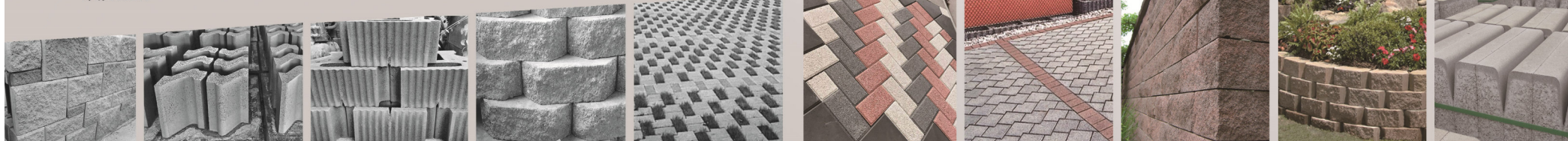
地址: 福建省泉州市晋江市五里开发区
电话: (86)595-28085862 15906071097 传真: (86)595-28085861
邮箱: sales@unikmachinery.com
网址: www.unikblockmachines.com www.unikmachinery.com www.cnunikmachinery.com
邮编: 362200



砖机.网址



Mobile phone website



WHO WE ARE



Professional Concrete Product Solution and Support

About us

We, Fujian Unik Machinery Technology Co.,Ltd, were founded in 2008 by a group of experienced engineers and technicians who had been working with Chinese block machine manufacturers for decades, all of them are specialists in block machine manufacture and operations. And also we have been relentlessly breeding and enhancing the mentality of "we won not succeed until our customer do" with this unique expertise and technical background together with "our customer's interest oriented" mentality, we have been trying to think at customer's angle, and provide add-valued service and product that would benefit our customer.

We different ourselves with high marketing sensitivity, extreme quality control system, flexible project designing to provide our customer the best cost performance block factory, and our machines are highly engineered using the best materials and components to guarantee high reliability and quality.

It combines this with a complete consultancy service,dealing with the smallest technical question right up to the design of complete factories, to help expand and refurbish existing facilities or to advise,support and supply green field start up investments.



公司简介

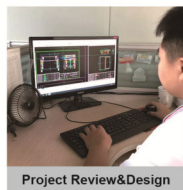
福建省右立机械科技有限公司始创于2008年，本公司是砌块成型机专业制造厂，多年来逐步形成集产品开发、设计、制造及专业教育培训，售后服务为一体的综合性企业，始终坚持以“技术做专、企业做强”为方向，集深厚底蕴结合现代先进技术与设备，公司拥有较大的生产规模以及雄厚的技术生产实力，产品系列化，行销全国各省市，并出口东南亚等发展中国家。

本公司的产品之所以深受全国各地用户的欢迎和青睐，是因为多年来不断吸收国内外先进技术的同时，还根据客户的需求与反馈不断改进、完善、提高产品质量和水平，研发出多种具有行业领先的专利产品，它具有全面合理的机械结构和性能，能给用户提供最好的品质保障，公司全面实施ISO9000、14000质量和环境管理体系，产品销售覆盖全国多个省市及出口至东南亚，非洲，中东，南亚等多个国家和地区。



Our service

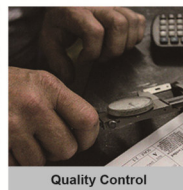
- ★ Project analysis with our customer
- ★ Engineering and designing
- ★ Accessory outsource and quality control
- ★ Commissioning, training and service



Project Review&Design



Manufacturing



Quality Control



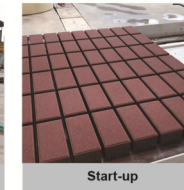
Assembling&Testing



Shipping



Installation



Start-up

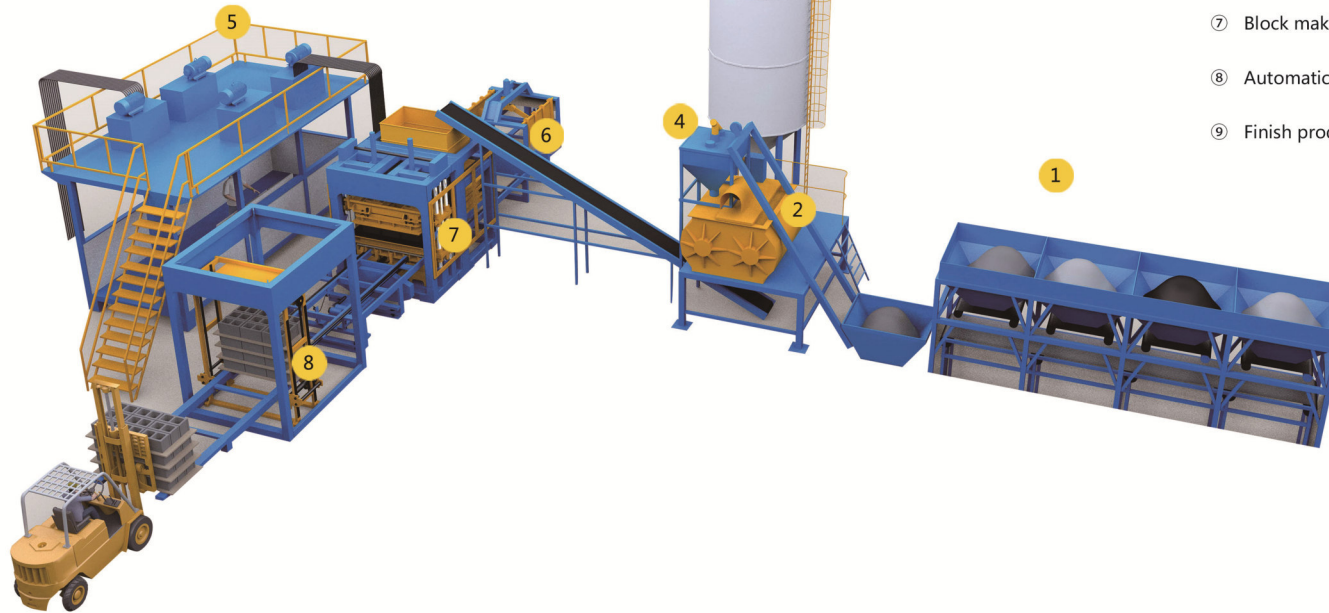
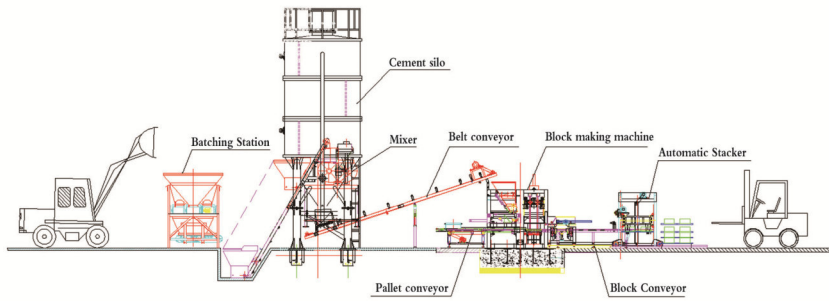


Personnel Training



Support

Automatic Concrete Block Making Plant

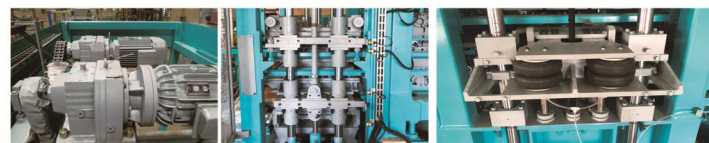


- ① Batching station 配料机
- ② JS Compulsory mixer 强制式搅拌机
- ③ Cement silo 水泥仓
- ④ Cement scale 水泥称
- ⑤ Control room 控制室
- ⑥ Conveyor belt 输送皮带
- ⑦ Block making machine 制砖机
- ⑧ Automatic stacker 自动叠板机
- ⑨ Finish products storage 成品堆场



Key Technical Features:

- 1.The frame material of the brick machine is made of Q335B high-strength steel, providing a more sturdy and reliable structure. The supporting beams for the pressure head cylinder and guide columns are completely welded using industrial fixtures for precise positioning. After being checked by a coordinate measuring instrument, their position accuracy reaches 0.2mm or higher. This ensures a smoother release of the mold and guarantees the quality of the finished products.
- 2.The block machine adopts internationally renowned electronic components such as Siemens, Schneider, Omron, and Mitsubishi, ensuring mature and stable programming. Equipped with a large 15-inch touch screen, it enables human-machine interaction and easy-to-use visualized operation. Its technological parameters are easily adjustable. Emphasizing its positive aspects, this article highlights how the block machine offers a user-friendly experience, simplifies operation, and maximizes efficiency.
- 3.The block machine adopts servo hydraulic control technology and Taiwanese CML hydraulic valve to achieve quick operation of feeding, head lifting, demolding, and other actions with brake function. The running process uses flexible automation control technology to reduce hydraulic impact and low noise, which all improve the production efficiency and stability of the entire machine.
- 4.Our block-making machine is designed with the latest servo vibration technology, enabling us to achieve ultra-high speeds and large amplitudes, all while consuming minimal energy. With this technology, the vibrating force is evenly distributed throughout the vibration table, ensuring consistent strength and density of the final product. This cutting-edge technology increases efficiency and productivity while maintaining the highest quality standards.
- 5.Our molds adopt advanced design concepts and are made from high-quality, imported, wear-resistant steel as the main raw material. Utilizing CNC machining centers, we can ensure precision manufacturing while also incorporating heat treatment to maximize the wear resistance of the materials. Our molds are built to last, ensuring that our customers receive the highest quality products possible. We are dedicated to constantly improving and incorporating new technologies to remain at the forefront of the industry.



Helical Bevel Gear Reducer
斜齿轮减速机

Longer Guide Sleeve
超长导向套

Mould Box Damping Airbag
减震气囊



Retractable Vibration Table
动静台高效振动

Compulsory Feeding System
快速布料

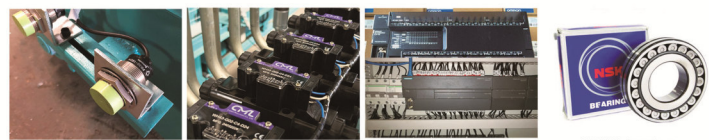
Servo Control System
伺服控制系统



OLI-WOLONG Vibrator
欧力卧龙振动器

Schneider Electrical Components
施耐德电子元件

Siemens Motor
西门子电机



Autonics Sensor
奥托尼克斯传感器

CML Valve
台湾全懋液压阀

Omron/Siemens PLC
欧姆龙/西门子 PLC

NSK Bearing
NSK轴承



Efficient Servo Hydraulic System
高效伺服液压



Non-Welded Hydraulic
Hose Connections
非焊接液压管路



Upper Mould Safety Lock
上模安全锁

Product introduction

—The easy handling and simple maintenance



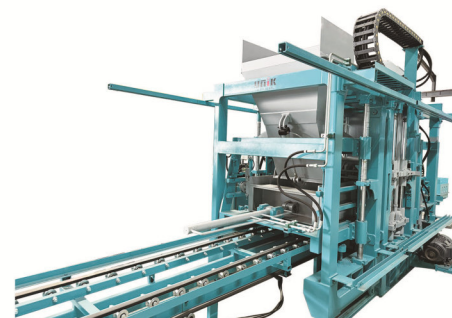
UNT800 Block Making Machine

Technical Specification 技术参数:

Items	项目	Specification参数
Dimension	设备尺寸	3200*2670*3000mm
Pallet Size	托板尺寸	1100×680×20-35mm
Vibration Frequency	振动频率	3800-5500 r/min
Hydraulic Pressure	额定压力	25 mpa
Vibration Force	激振力	75 KN
Cycle time	成型周期	15-20s
Power	功率	48.95kW
Weight	重量	8200 KG

Products产品	Dimension尺寸 (mm)	Pcs/Cycle块数
	240*115*53	40
	225*112*60/80	20
	200*100*60/80	27

UNT700 Block Making Machine



Technical Specification 技术参数:

Items	项目	Specification参数
Dimension	设备尺寸	3200*2450*3000mm
Pallet Size	托板尺寸	880×680×20-35mm
Vibration Frequency	振动频率	3800-5500 r/min
Hydraulic Pressure	额定压力	25 mpa
Vibration Force	激振力	75 KN
Cycle time	成型周期	15-20s
Power	功率	48.95kW
Weight	重量	7400 KG

Products产品	Dimension尺寸 (mm)	Pcs/Cycle块数
	400*150*200	8
	225*112*60/80	15
	200*100*60/80	21

UNT400 Block Making Machine

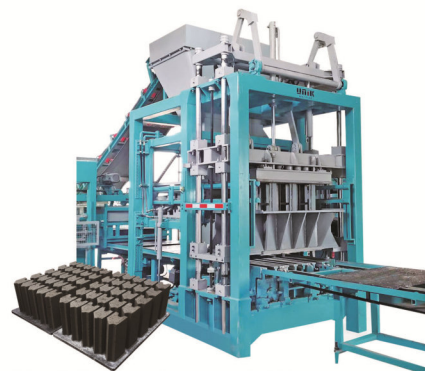
Technical Specification 技术参数:

Items	项目	Specification参数
Dimension	设备尺寸	2800*2100*2700mm
Pallet Size	托板尺寸	700×540×18-25mm
Vibration Frequency	振动频率	3800-5500 r/min
Hydraulic Pressure	额定压力	10 mpa
Vibration Force	激振力	68 KN
Cycle time	成型周期	15-20s
Power	功率	23.3kW
Weight	重量	5500 KG

Products产品	Dimension尺寸 (mm)	Pcs/Cycle块数
	400*100*200	5
	400*150*200	4
	225*112*60/80	10

Product introduction

PROVIDE COMPLETE SOLUTION
FOR CONCRETE MANUFACTURERS
专业制造砌块成型机



砖的高度可做到400mm. Can produce up to 400mm height blocks

UNT1000 (欧版) Block Making Machine

Technical Specification 技术参数:

Items	项目	Specification参数
Dimension	设备尺寸	3400*2900*3700mm
Pallet Size	托板尺寸	1100*780*25-40mm 900*900*25-40mm
Vibration Frequency	振动频率	3800-4500 r/min
Hydraulic Pressure	额定压力	25 mpa
Vibration Force	激振力	75 KN
Cycle time	成型周期	15-20s
Power	功率	50.75kW
Weight	重量	11500 KG
Products产品	Dimension尺寸 (mm)	Pcs/Cycle秒率
	240*115*53	40-44
	225*112*60/80	20-24
	200*100*60/80	27-30



UNT1300 Block Making Machine

Technical Specification 技术参数:

Items	项目	Specification参数
Dimension	设备尺寸	3790*3500*3700mm
Pallet Size	托板尺寸	1200*980*35-45mm
Vibration Frequency	振动频率	3800-4500 r/min
Hydraulic Pressure	额定压力	25 mpa
Vibration Force	激振力	80 KN
Cycle time	成型周期	15-20s
Power	功率	79.75kW
Weight	重量	13200 KG
Products产品	Dimension尺寸 (mm)	Pcs/Cycle秒率
	240*115*53	56
	225*112*60/80	28
	200*100*60/80	40

UNT1200A Block Making Machine

Technical Specification 技术参数:

Items	项目	Specification参数
Dimension	设备尺寸	3970*3500*3700mm
Pallet Size	托板尺寸	1380 × 760 × 25-40mm
Vibration Frequency	振动频率	3800-4500 r/min
Hydraulic Pressure	额定压力	25 mpa
Vibration Force	激振力	80 KN
Cycle time	成型周期	15-20s
Power	功率	79.75kW
Weight	重量	11200 KG
Products产品	Dimension尺寸 (mm)	Pcs/Cycle秒率
	240*115*53	55
	225*112*60/80	25
	200*100*60/80	36

UNT1200B Block Making Machine

Technical Specification 技术参数:

Items	项目	Specification参数
Dimension	设备尺寸	690*3500*3700mm
Pallet Size	托板尺寸	1100 × 950 × 25-40mm
Vibration Frequency	振动频率	3800-4500 r/min
Hydraulic Pressure	额定压力	25 mpa
Vibration Force	激振力	80 KN
Cycle time	成型周期	15-20s
Power	功率	79.75kW
Weight	重量	12800 KG
Products产品	Dimension尺寸 (mm)	Pcs/Cycle秒率
	240*115*53	56
	225*112*60/80	24
	200*100*60/80	36

HOURLY PRODUCTION CAPACITY (PCS)

各机型每小时产量

Specification	UNT400	UNT700	UNT800	UNT1000	UNT1200A	UNT1200B	UNT1300
Rectangular Pavers 	100*200*80mm 2880	5040	6480	6480-7200	8640	8640	9600
Interlocking S-Pavers 	225*112*80mm 2400	3600	4800	4800-5760	6000	5760	6720
Bricks 	240*115*53mm 4800	7200	9600	9600-10560	13200	13440	13440
Hollow Blocks 	400*200*200mm 540	1080	1260	1350	1620	1800	1800
	400*150*200mm 720	1440	1440	1440	2160	2160	2520
	400*100*200mm 900	1800	1440	2700	3240	3240	3240
Behaton Pavers 	165*200*80mm 2160	2800	4320	3600-4800	5760	4800	6000
Kerbstones 	200*450*600mm 240	240	480	480	480	480	480
	200*300*600mm 240	480	480	720	960	720	720
Grass Planting Pavers 	400*400*60mm 240	480	480	480	720	960	960
	600*400*60mm 240	480	480	480	720	720	960
Perforated Blocks 	115*240*90mm 2400	3600	4800	4800-5280	4800	6720	6720
Hourdis 	530*120*200mm 720	1080	1260	1260	1800	1260	2160
	530*160*200mm 540	720	1080	1080	1440	1080	1800

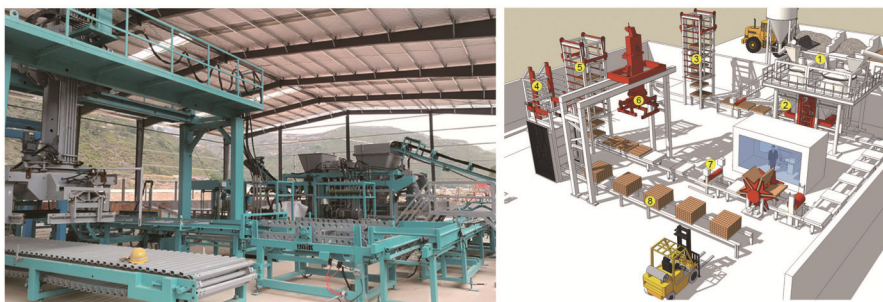
以上数据为理论值, 实际产量取决于设备的调整使用状况, 产品配方和原材料等诸多因素。

Remarks:*The capacity data are theoretical and depend on machine setting,mix design,aggregate used and other environmental conditions.

Fully Automatic Concrete Block Production Line 全自动砌块生产线

Total process control for concrete production plants: wheel loader will put different aggregates in the batching station, it will measure them to the required weight and then combine with the cement from cement silo. All of the materials will then be sent to the mixer. After being mix evenly, the belt conveyer will convey the materials to the block making machine. The finished blocks will be transferred to the automatic elevator. Then the finger car will take all pallets of blocks to the curing chamber for curing. The finger car will take other cured blocks to the automatic lowerator. And pallet tumbler can get rid of the pallets one by one and then automatic cuber will take the blocks and stack them to a pile, then the fork clamp can take the finished blocks to the yard for sales. The whole production process is controlled by computer and is completed by mechanical automation

全自动生产线流程：装载机将不同的骨料放入配料站，自动配比重，然后与水泥仓的水泥混合。所有材料随后被送至搅拌机，在混合均匀后，皮带输送机将物料输送到砌块成型机，振动加压成型的制品经砖面清扫器清扫后由送砖机输送到自动升板机。随后，子母车将所有托板上的制品送到养护室养护。已养护好的制品再由子母车送到自动降板机。降板机将制品降至送砖机后进入码垛区码垛，然后由叉车运至成品堆场销售。托板经清扫器清扫，翻板机翻板后送回成型机循环使用。整个生产过程都是由电脑控制，机械自动化完成。



组成部分:

Complete line of equipment:

- 1、Batching and mixing plant 配料搅拌系统
- 2、Block machine(applicable to various models) 成型主机（适用于各种机型）
- 3、Elevator 升板机
- 4、Finger car system 智能子母车
- 5、Lowerator 降板机
- 6、Automatic cubing system 自动码垛系统
- 7、Pallet return system 自动回板系统
- 8、Pallet exit conveyor 出垛系统



Automatic Block Cuber & Packing Machine 自动码砖机&打包机

The system is placed independently in the vicinity of the product maintenance yard, and the well-prepared products are palletized on the spot, and can also be connected in series with the block production line. This system is complete with: block & pallet conveyor, block pushing machine, block cuber, stacker device, the palletizing and assembling mechanism, and packing machine. The whole machine adopts motor and pneumatic as driving power, and the electric drive is frequency-controlled and has the characteristics of intelligence, stability, high efficiency and low power consumption.

Main Features:

- ① Work independently and automatically, and is compatible with existing block plant.
- ② PLC control, and no need to integrate the control system with block machine control system
- ③ Greatly reduce manpower and increase block plant efficiency.



本码垛生产线适用于简易型砌块生产线的干产品码垛，属于半自动码垛生产线，一般情况下独立设置于产品养护堆场附近，对于养护好的制品就地码垛，亦可与生产线串联，实现在线码垛。

本自动码垛系统可将不同型号砖机生产的不同规格的砌块进行砖板分离，排块整理然后排成1000—1200（mm）的方垛进行码放（标准实心砖一次码放高度可达12层），经出砖可选择进行缠绕膜打包。配合叉车抱夹可不用托盘直接抱到场地码垛，堆放高度可放3垛。整套系统采用PLC人机界面触摸屏控制，只需一人操作。日码砖量约3800板/班，可大大节约人工成本。

Pallet Feeding Machine 侧向送板机

Technical specification 技术参数:

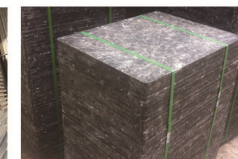
Items	项目	Specification参数
Suitable Pallets Size	适用托板尺寸	700x540—880x1440mm
Pallets Quantity	托板数量	25—30pcs
Hydraulic Pressure	压力	14—20mpa
Bearing Weight	载重	1200kg
Power	功率	1.5kW



PVC PALLET



WOODEN PALLET



GMT PALLET

PL Series Concrete Batching Machine PL系列配料机

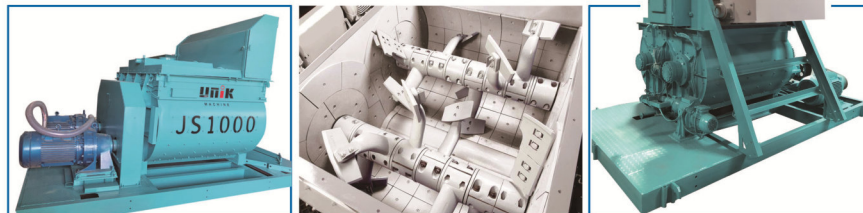


Technical Specification 技术参数:

Items	项目	PL800	PL1200	PL1600
Weighted capacity	载重	0.8m³	1.2m³	1.6m³
Storage bucket capacity	料斗容量	2×2m³	3×4m³	3×7m³
Productivity	产量	48m³/h	72m³/h	96m³/h
Batching precision	精确度	±2%	±2%	±2%
Max. Weight Capacity	最大承重	1500 KG	2000 KG	4000KG
Batching category	配料种类	2	3	3
Loading height	载重高度	2300mm	2500mm	2600mm
Dimension	尺寸大小	5470×1820×2810mm	8650×2000×2900mm	9600×2300×3070mm
Power	功率	6.6kW	5.5kW	5.5kW
Weight	重量	2300 kg	4000 kg	4820 kg

Measurement method: electronic load cells

JS Series Compulsory Mixer JS系列强制式搅拌机



Technical Specification 技术参数:

Items	项目	JS500	JS750	JS1000	JS1500	JS2000
Rated discharging volume	出料容量	500L	750L	1000 L	1500L	2000L
Rated feeding volume	进料容量	800L	1200L	1600 L	2400L	3200L
Rated productivity	理论生产率	≥25m³/h	≥37.5m³/h	≥50m³/h	≥75m³/h	≥120m³/h
Power of mixing motor	搅拌机功率	18.5kW	30kW	37kW	60kW	74kW
Power of winch motor	卷扬电机功率	5.5kW	7.5kW	10kW	18.5kW	30kW
Power of water pump motor	水泵功率	0.75kW	1.1kW	2.2kW	3kW	7.5kW
Discharging height	卸料高度	1500mm	1600mm	1800mm	2700mm	3800mm
Dimension尺寸	Working state 工作状态	2600×3050×2100mm	3320×2400×2600mm	9700×3695×8460mm	9645×3436×9700mm	10720×3870×10726mm
	Transportation state 运输状态	3870×3050×5250mm	3320×2400×4900mm	4400×2230×2700mm	4720×2200×3000mm	5860×2250×2735mm
Weight	重量	4000kg	6800kg	8750kg	10130kg	12000kg

MP Series Planetary Concrete Mixer MP系列行星式搅拌机



Items	项目	MP330	MP500	MP750	MP1000	MP1250	MP1500
Filling Volume	进料容量	500	750	1125	1500	1875	2250
Feeding Capacity	进料容量	790	1200	1800	2400	3000	3600
Output Volume	出料容量	330	500	750	1000	1250	1500
Mixing Power	搅拌功率	15	18.5	30	37	45	55
Mixing Star/Mixing Blade	行星 搅拌叶片数量	1*2	1*3	1*3	2*3	2*3	2*3
Side Scraper/Discharge Scraper	侧刮板数量 卸料刮板数量	1/1	1/1	1/1	1/1	1/1	1/1
Discharging Power	斜料功率	2.2	2.2	2.2	2.2	2.2	2.2
Weight	整机重量	2200	2500	3500	5500	6000	6500

注:由于我们不断对产品进行性能完善和技术改进,产品参数以实物为准。

Technical data may change due to technical progress. Subject to modification without notice.



Model	项目	JN350	JN500
Output capacity	产能	350L	500L
Rotate speed (r/min)	转速	21	40
Power(kW)	功率	5.5kW	11kW
Dimension	尺寸大小	Φ1200*1410mm	Φ1300*1410mm

Concrete Ready Mix Plant 混凝土搅拌站

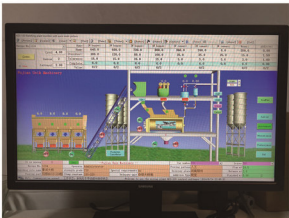


Unik is dedicated to the research, design, and production of a complete set of concrete ready mix plants that provide solutions for a wide range of construction needs, including highways, bridges, dams, airports, and ports. Our concrete mixing plants feature advanced weighing and mixing technology imported from overseas, delivering exceptional quality and performance. Additionally, we offer complete packaging and transportation solutions, ensuring that our customers receive the best possible service and support every step of the way. Choose UNIK for the ultimate in concrete mixing solutions and experience the difference that quality, reliability, and service can make!

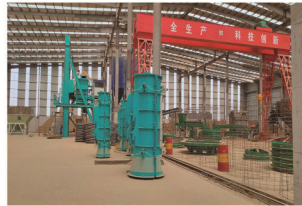
Technical Specification 技术参数:

Type		HZS50	HZS75	HZS100	HZS150	HZS200
Productivity(m³/h)产能		50	75	100	150	200
Mixer 搅拌主机	Type 型号	JS1000	JS1500	JS2000	JS3000	JS4000
	power(kw)功率	2×22	2×30	2×37	2×55	2×75
	capacity(m³)容量	1	1.5	2	3	4
	AG size(mm) 尺寸	≤60	≤80	≤120	≤150	≤200
Aggregate hopper 配料仓	Hopper dimension (m³) 料仓尺寸	13	15	18	25	30
	Hopper No. 料仓数量	3	3	3	4	4
Conveying capacity(t/h) 传送量		200	300	400	600	800
Weighing Accuracy 称重精度	AG(kg) 骨料	2500±2%	3500±2%	4500±2%	6500±2%	9000±2%
	Cement(kg) 水泥	600±1%	900±1%	1200±1%	1800±1%	2400±1%
	Fly ash(kg) 粉煤灰	200±1%	300±1%	400±1%	600±1%	800±1%
	Water(kg) 水	300±1%	400±1%	600±1%	800±1%	1000±1%
	Admix(kg) 添加剂	10±1%	30±1%	30±1%	50±1%	50±1%
Total power(kw) 总功率		92	108	118	178	230
Discharging height(m) 卸料高度		3.8	3.8	3.8	3.8	3.8

The technical parameters mentioned above are not set in stone; we can make appropriate adjustments based on the specific requirements of our clients



Vertical Type Radial Extruding Pipe Making Machine



The Vertical Type Radial Extruding Pipe Making Machine adopts a vertical production method. The forming principle involves an extrusion head that is sized to match the internal diameter of the pipe. By rotating and lifting at a certain speed, the concrete is compacted and extruded with high production efficiency, resulting in good forming effects. The quality of the concrete products fully meets the requirements of the GB11836-2023 standard. This process is typically used to manufacture reinforced concrete drainage pipes with diameters ranging from 300mm to 1500mm. This equipment is highly efficient in terms of production. For instance, when manufacturing a pipe with a diameter of 600mm and a length of 3 meters, the entire process takes only 3 minutes to complete a single pipe.



Suspension Roller Concrete Pipe Machine

The Suspension Roller Concrete Pipe Machine is designed to manufacture a variety of concrete pipes with different diameters and lengths. It operates on the principle of using a rotating roller to apply pressure and centrifugal force to the concrete within a mold, causing it to compact and form into a pipe shape. This machine is widely used for municipal drainage, agricultural irrigation, highway culverts, and deep well applications. It is a high-speed, high-performance machine for the manufacturing of concrete pipes in the diameter range from Ø300mm to Ø2000mm, and a maximum length of up to 3 meters per pipe. We can design and produce the reinforced cement concrete pipe with various kinds of pipe joint, such as plain end, bell and spigot, tongue-and-groove.

Model	Diameter	length	Main Power	Rotation shaft diameter	Rotation speed
SR600	300-600mm	2000mm	15kW	140mm	83-833 r/min
SR1200	800-1200mm	2000mm	30kW	273mm	69-687 r/min
SR1500	1000-1500mm	2000mm	55kW	325mm	65-653 r/min
SR2000	1500-2000mm	2000mm	90kW	426mm	100-400 r/min

The technical parameters mentioned above are not set in stone; we can make appropriate adjustments based on the specific requirements of our clients.



Concrete Lintel & Column Machine



Technical Specification

Model	Product thickness(mm)	Product width(mm)	No. of holes	Diameter of holes(mm)	Motor power(kw)	Vibrator power(kw)	Molding speed(m/min)
ZB70x140-4	70	140	1	30	5.5	1.5	1.1-1.3
ZB75x150-6	75	150	1	30	7.5	3	1.1-1.3
ZB70x110-8	70	110	1	30	7.5	3	1.1-1.3
ZB120x240-2	120	240	2	65	5.5	2.2	1.1-1.3
ZB180x240-2	180	240	1	80	5.5	3	1.1-1.3
Model	Product thickness(mm)	Product width(mm)	No. of holes	Diameter of holes(mm)	Motor power(kw)	Vibrator power(kw)	Molding speed(m/min)
ZB120x120-4	120	120	1	35	5.5	2.2	1.1-1.3
ZB60x60-8	60	60	Solid	/	4	1.5	1.1-1.3
ZB100x100-8	100	100	1	30	7.5	3	1.1-1.3

Concrete Fencing/Boundary Wall Panel Machine

Technical Specification

Model	Product thickness(mm)	Product width(mm)	No. of holes	Diameter of holes(mm)	Motor power(kw)	Vibrator power(kw)	Molding speed(m/min)
ZB50x300-2	50	300	4	25	4	1.5	1.1-1.3
ZB90-600	90	600	7	42	5.5	2.2	1.1-1.3

Concrete H Beam Machine

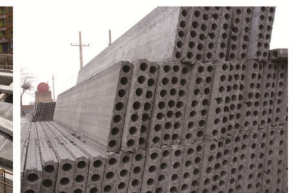
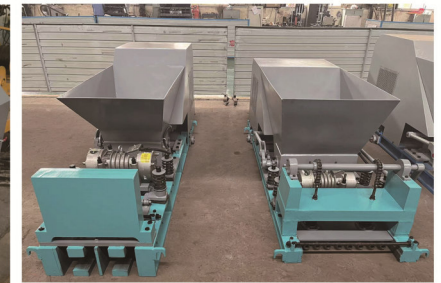
Technical Specification

Model	Product thickness(mm)	Product width(mm)	No. of holes	Diameter of holes(mm)	Motor power(kw)	Vibrator power(kw)	Molding speed(m/min)
ZB150x150-2	150	150	1	25	7.5	1.5	1.1-1.3
ZB180x280-2	180	280	1	30	11	3	1.1-1.3

Concrete T Beam Machine

Technical Specification

Model	Product thickness(mm)	Product width(mm)	No. of holes	Diameter of holes(mm)	Motor power(kw)	Vibrator power(kw)	Molding speed(m/min)
ZB90x120-4	90	120	Solid	Solid	7.5	1.5	1.1-1.3
ZB100x130-4	100	130	Solid	Solid	7.5	1.5	1.1-1.3



CustomCraft Block Molding Solutions

Experience the future of masonry with CustomCraft Block Molding Solutions—where precision, customization, and innovation meet to elevate your construction projects new levels of excellence.



Precast Concrete Moulds

With years of experience in the industry, Our team of experts can design and manufacture custom moulds to meet your every need. To ensure the stability and precision of the concrete elements, all our moulds are 3D CAD designed and computer simulated before fabrication. Our product range includes a wide variety of moulds for precast elements such as defense barriers, Manholes, Channels for drainage, custom culvert and Lego block.

We pride ourselves on our ability to provide reliable, high-quality solutions that exceed customer expectations.

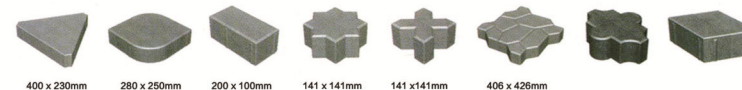


CONNECTING THE WORLD 全球用户



SAMPLE PRODUCT LIST 样品砖系列

Decorative pavers 地砖



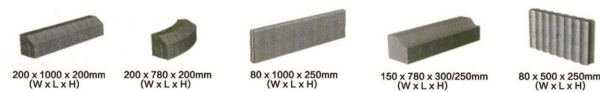
Eco, Drain-, Grass pavers 植草砖



Interlocking pavers 连锁砖



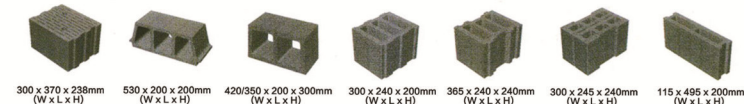
Kerbstone 路沿石



Landscaping products 风景砖



Masonry blocks 建筑空心砖



Retaining walls, palisades 挡土砖

